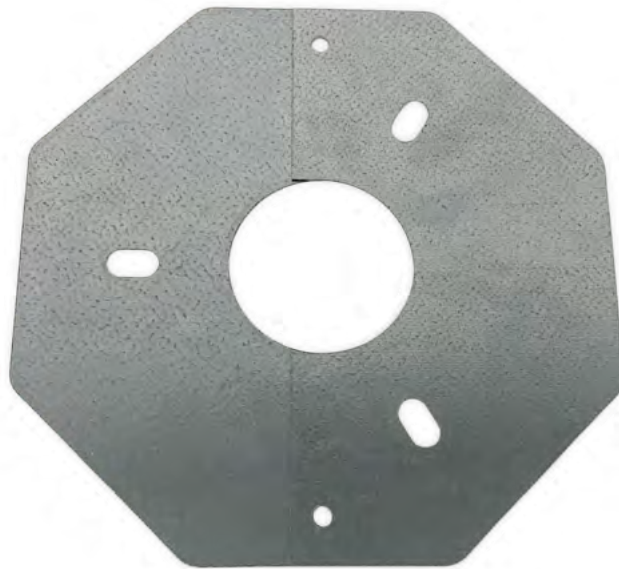


# FIRE PLATES



The Fire plate systems has been created to cater to a Cast-in Rocket fitting that creates a void on the underside of a flat slab substrate in a 50mm or 100mm FWG location. The 2x piece Fire Plate covers the void created by the Rocket fitting in the flat slab. It is fixed in place to secure the plates to the slab with an ALLFC placed over the Fire Plate and fixed through the cut out tab positions. The shape of the Fire Plate allows flexibility for changing the position when other services are connected or are around the FWG location.

## SUITABLE FOR FITTING TO:

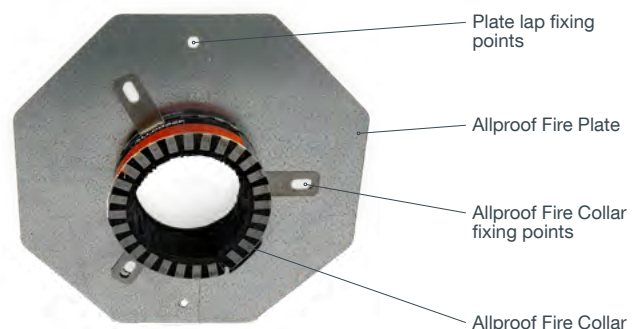
- Concrete Floors

## FEATURES:

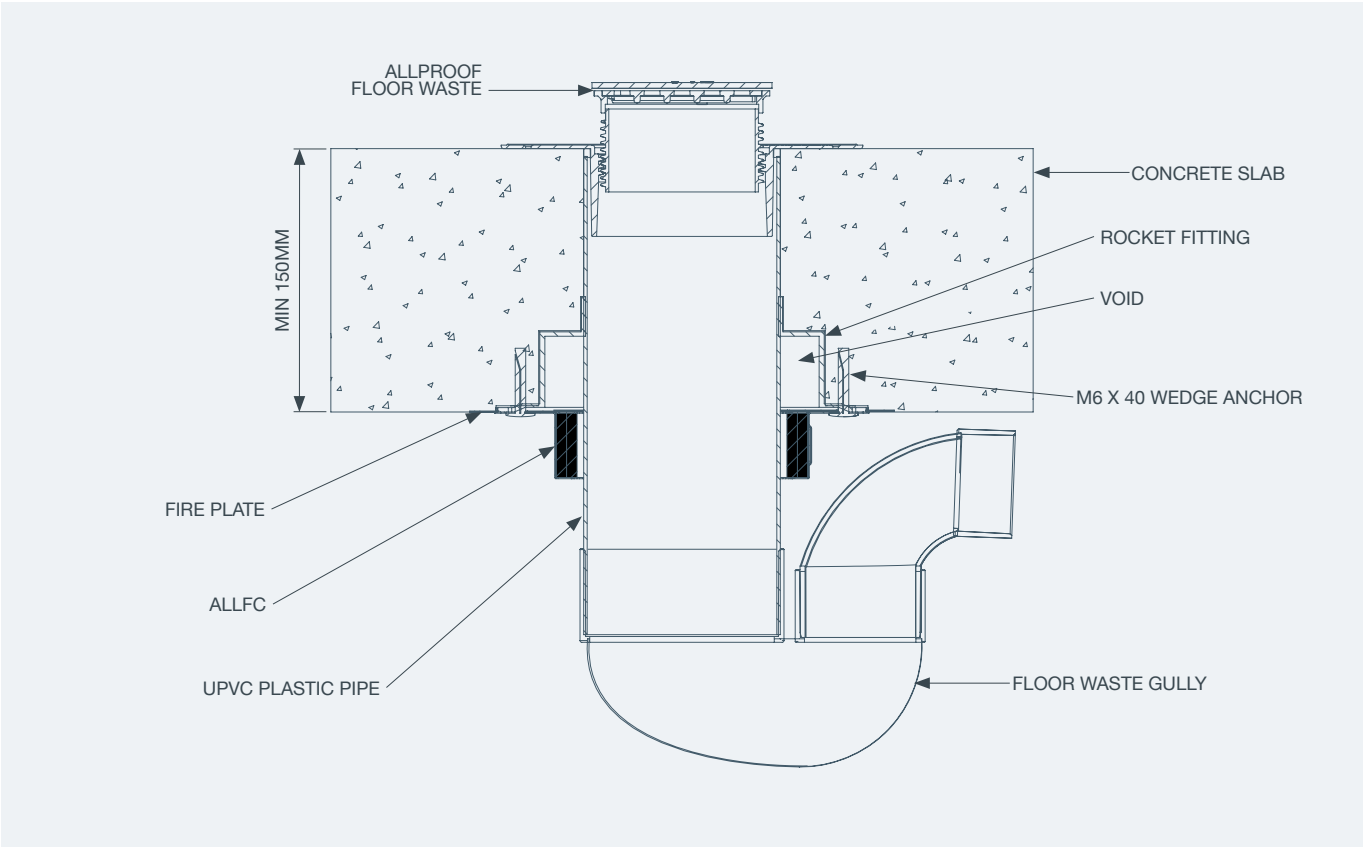
- Totally unaffected by water
- Retro or pre-service install fitting

## INSTALLATION INSTRUCTIONS:

1. Install floor waste pipe work
2. Ensure substrate around Rocket fitting is flat and free from obstructions.
3. Place plates around the uPVC pipe so it is centred and the plate lap fixing holes are aligned. Position plate so fixing points avoid obstructions when drilling, mark and set plate aside.
4. Drill fixing holes with a Masonry drill bit into the concrete slab to a depth that accommodates a 6 x 40mm wedge anchor.
5. Position plates and drive anchors into the concrete on plate lap fixing holes to secure in place.
6. Open fire collar and position around pipe.
7. Slide tab through slot in fire collar and fold back 180° to secure.
8. Secure fire collar by using 6 x 40mm wedge anchor as per testing. Do not use fixings which rely on plastic or nylon components for grip.
9. Install only from underside on floor penetrations.
10. Allproof recommends any thermal or acoustic lagging maintains a 50mm separation to the fire collar.



CONCRETE FLOOR INSTALLATION DETAILS:



CONCRETE FLOOR TEST RESULTS:

NOMINAL PIPE SIZE (MM)	SLAB DEPTH (MM)	NOMINAL PIPE WALL THICKNESS (MM)	PVC FITTING VOID (MM)	FIRE PROTECTION PRODUCT	FLOOR FRL	REPORT NUMBER
PVC PLASTIC PIPE						
50	150	2.5	110x45	FP50 + ALLFC50	-/180/180	149096
100	150	3.5	160x45	FP100 + ALLFC100	-/180/180	149096

Fixing: M6 x 40 Wedge Anchor

Tested to max voids 110mm x 45mm (50mm) and 160mm x 45mm (100mm) on 150mm depth concrete slab.